

PROJECT

DENSITY FRAMES

TYPE

INSTALLATION

LOCATION

USC RELIGIOUS CENTER
LOS ANGELES, CA
DATE

2011-2012

COST

\$ 1,000

The Density Frames installation is the iterative cousin of Light Frames. Deploying the same two doppelgänger parts: a new transparent levitating inflatable and a iterative variably triangulated structure; the relationship evolved from a planimetric adjacency to a sectional relationship. Stacked and interpenetrating, the structures negotiate the courtyard of the modernist religious center. Expanding the chapel, engaging the stair and courtyard, and consistently responding to the light and views of their experiential associations the inflatable expands to fill the void. The lower variably triangulated frame is formed through a combination of structural necessity and site based constraint along with spatial goals. As a shallow dome with an ocular void [filled by the penetrating inflatable] the north wall edges the stair and sits on an existing cast in place concrete planter wall. Matching the height of the stair landing, the frame folds in the space to create a lattice ceiling that lands on two figurative legs flanking and framing the chapel. The collective table form serves to catch the deflated drape of the inflatable figure when turned off.



BORDEN PARTNERSHIP

1918 LAUDERDALE STREET
HOUSTON, TEXAS 77030

www.bordenpartnership.com

PROJECT
DENSITY FRAMES



VIEW FROM STREET

ELEMENTAL ELEVATIONS



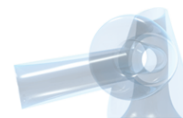
INFLATABLE



CONDUIT



BENCH



NORTH ELEVATION



EAST ELEVATION



SOUTH ELEVATION



WEST ELEVATION

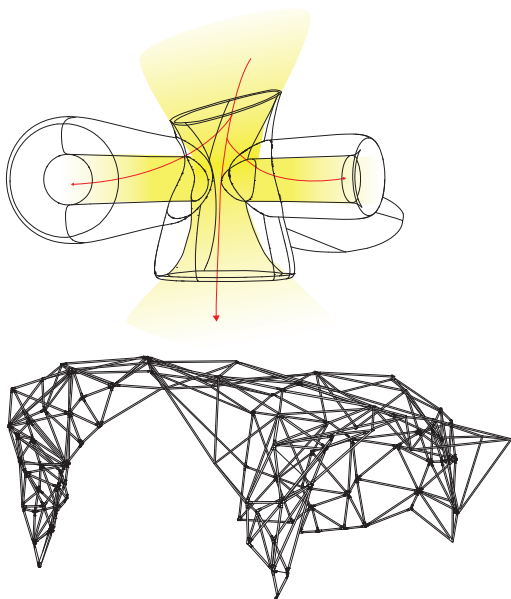


BORDEN PARTNERSHIP
1918 LAUDERDALE STREET
HOUSTON, TEXAS 77030

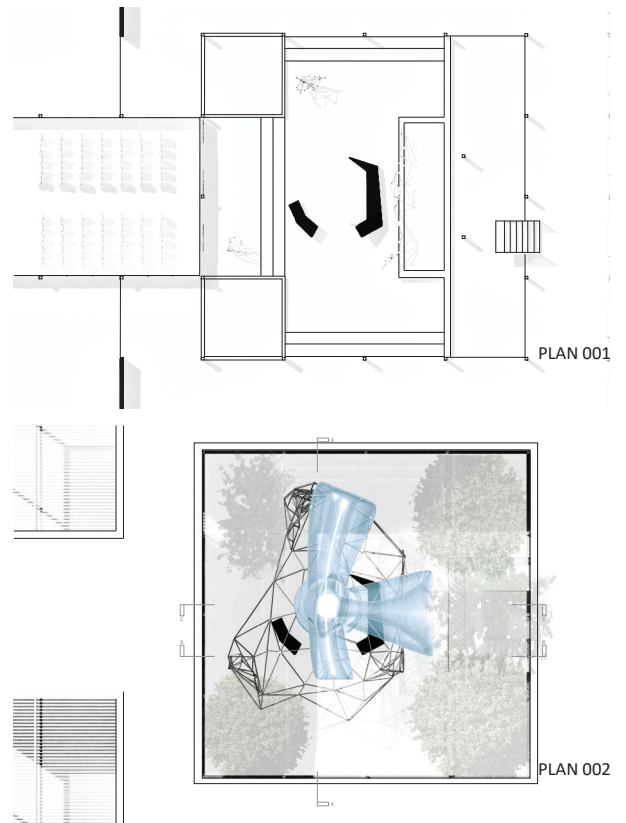
www.bordenpartnership.com



ENTRY



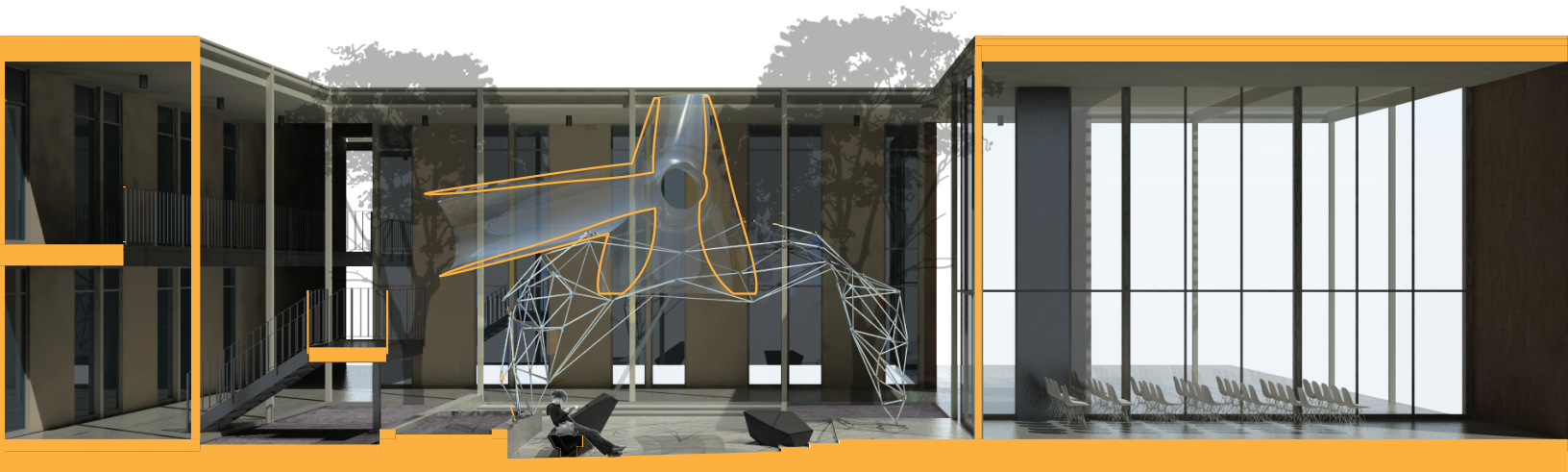
LIGHT TO FRAME



PLAN 001

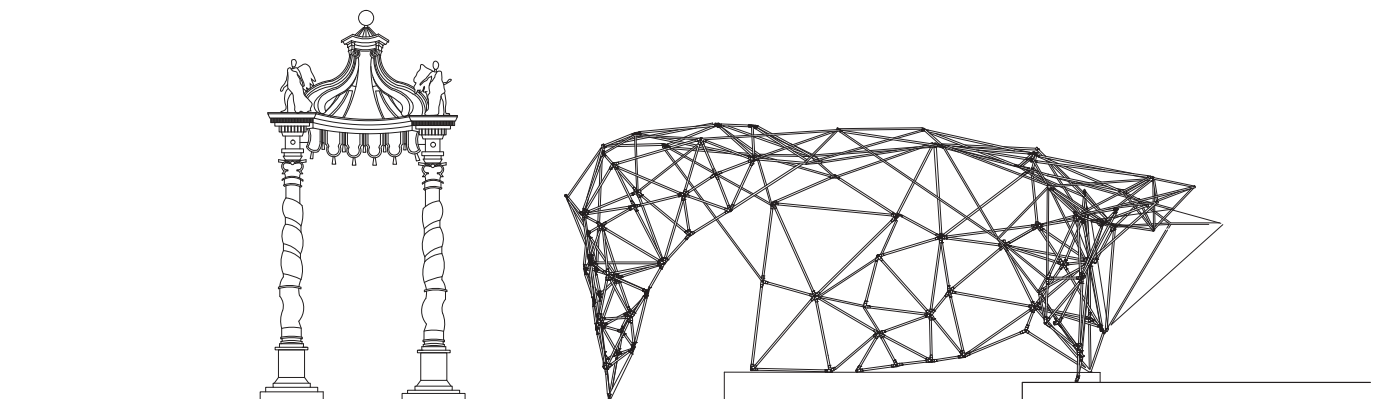
PLAN 002

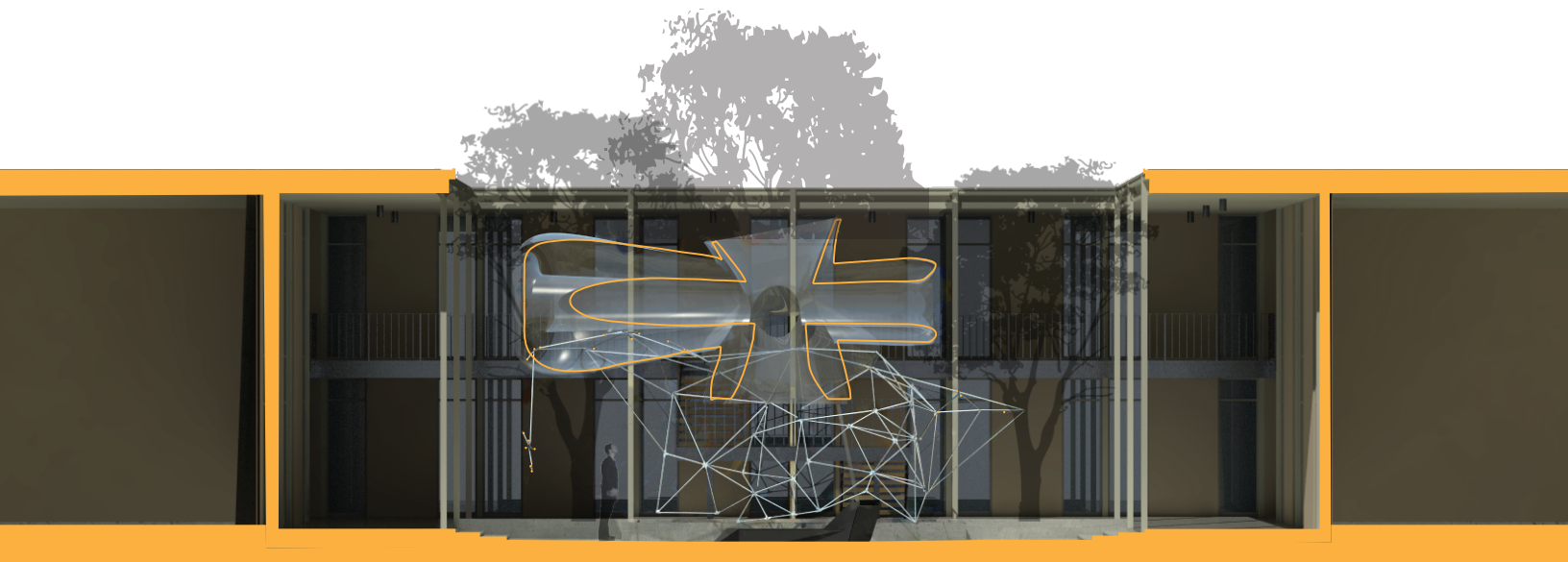
PROJECT
DENSITY FRAMES



LATERAL SECTION

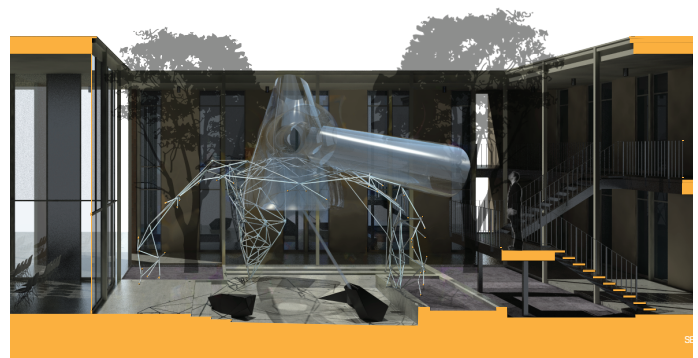
FRAME AS BALDACCHINO



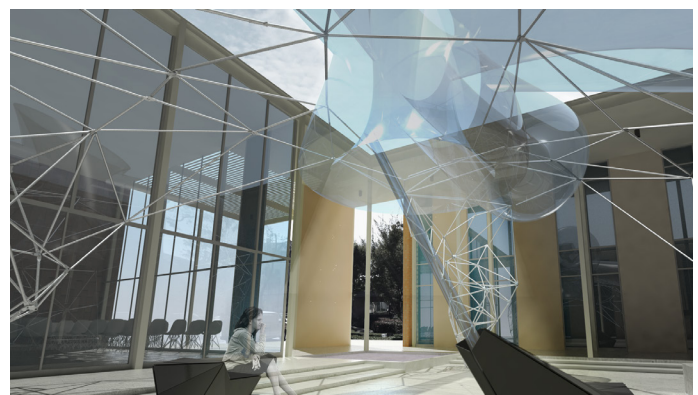


TRANSVERSE SECTION

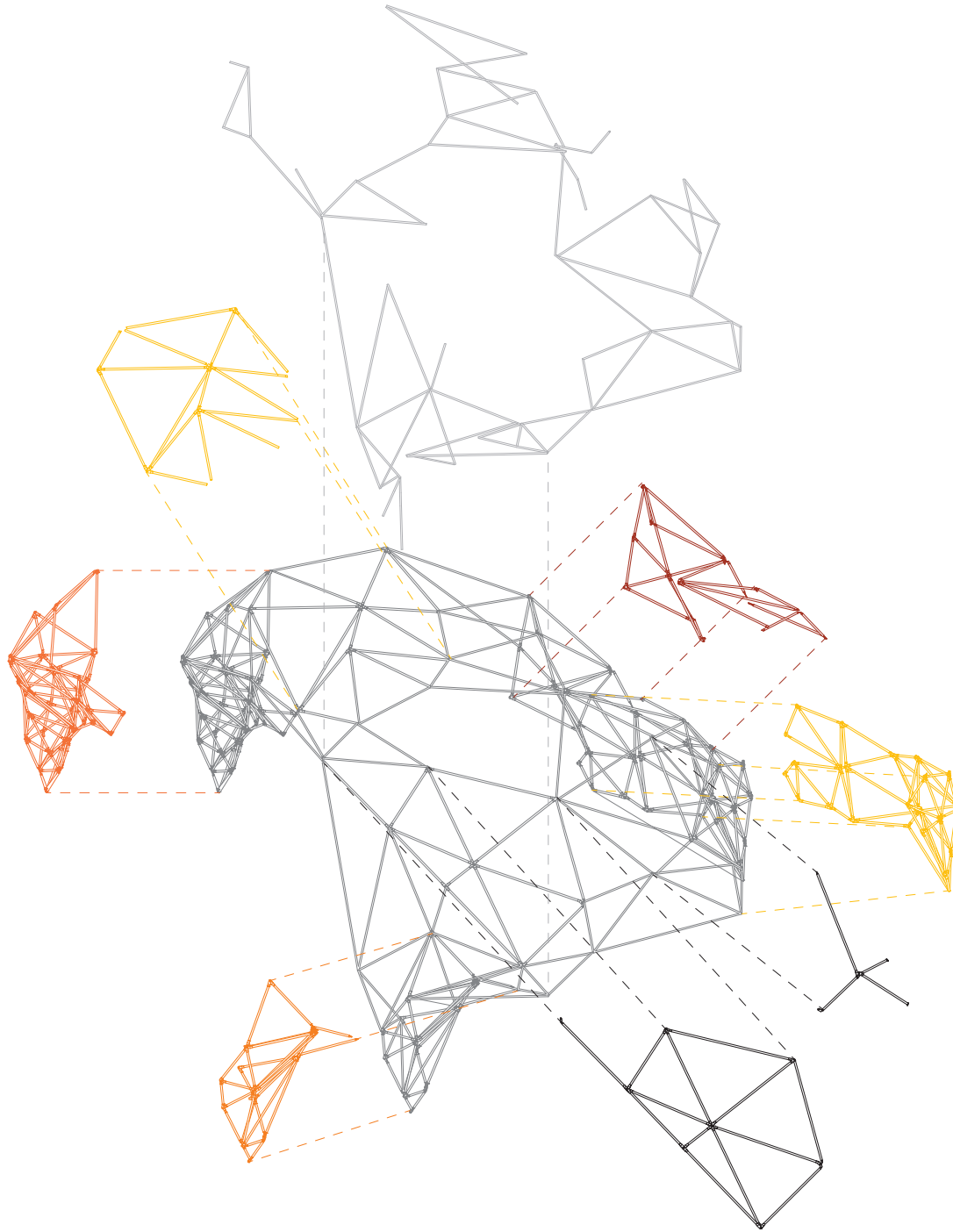
LONGITUDINAL SECTION LOOKING WEST



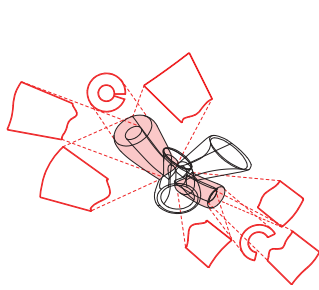
VIEW FROM BELOW



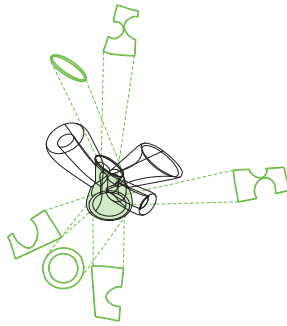
PROJECT
DENSITY FRAMES



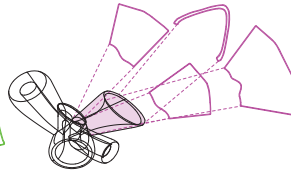
CONDUIT CANOPY WITH REITERATED CHUNKS



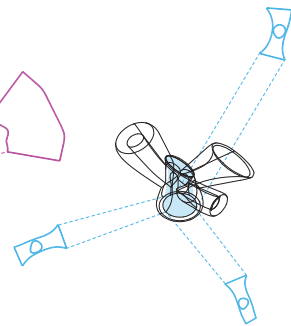
EASTWARD AND WESTWARD ARMS



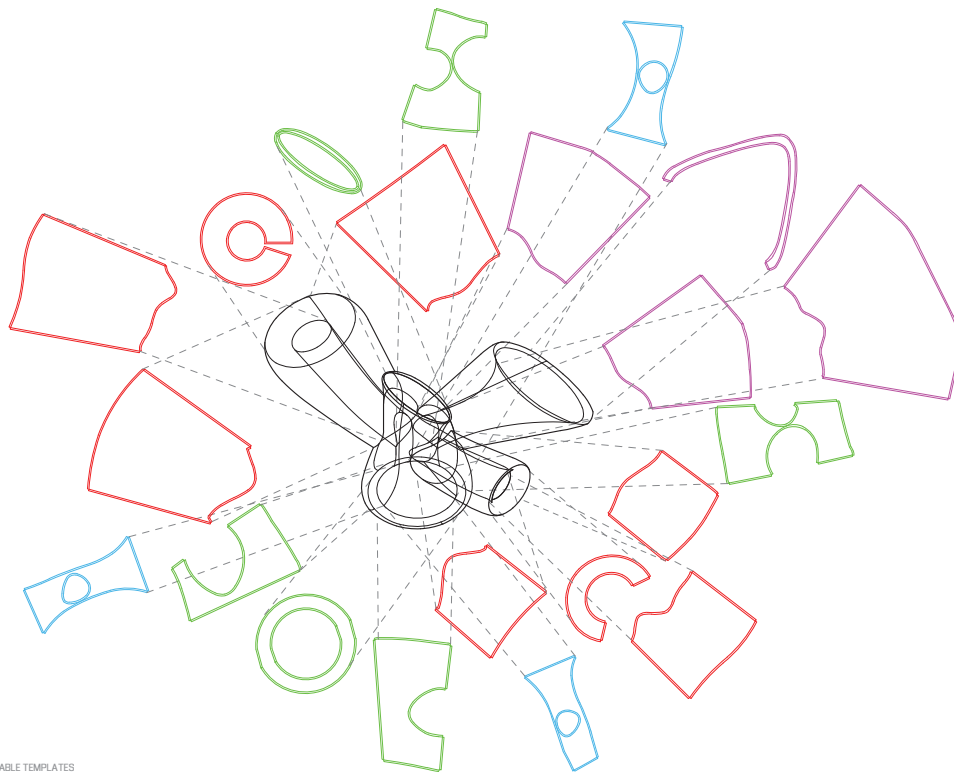
CENTER OUTER SHELL



SOUTWARD ARM

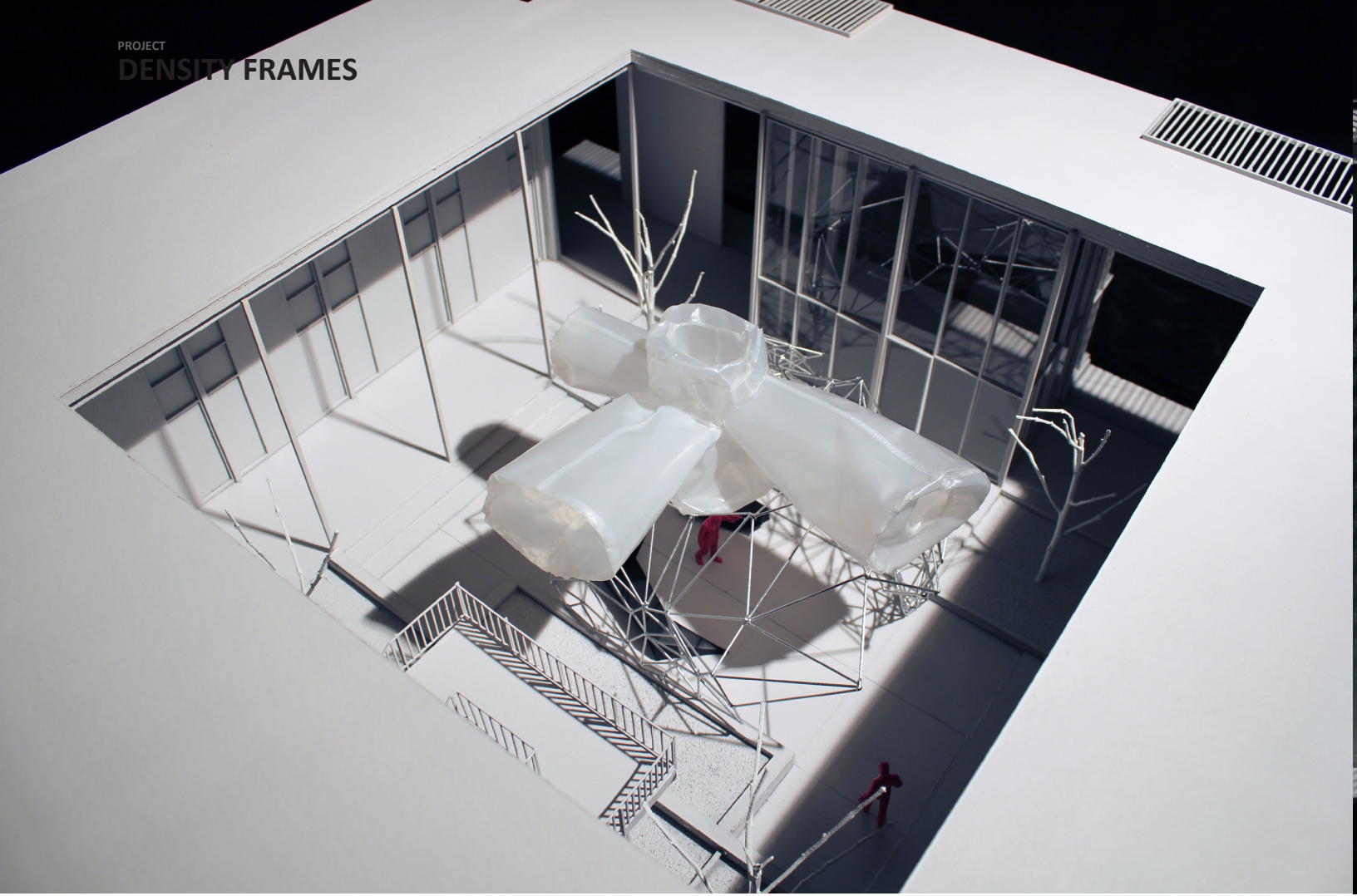


CENTER INNER SHELL



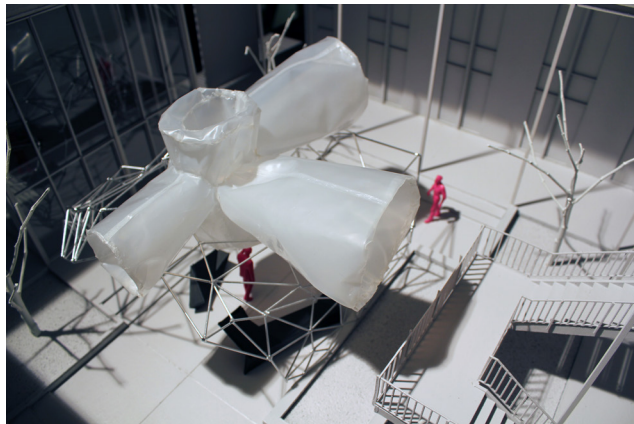
INFLATABLE TEMPLATES

INFLATABLE TEMPLATES



AERIAL VIEW FROM NORTH

TOP VIEW





VIEW FROM CHAPEL

FRAGMENT VIEWS





DENSITY FRAMES



BORDEN PARTNERSHIP

1918 LAUDERDALE STREET
HOUSTON, TEXAS 77030

www.bordenpartnership.com

